

PV MODULE ACCESSORY

MOUNTING SYSTEMS

PV GRID-CONNECTED INVERTER



ASTRONERGY KITS -- PV SYSTEM



THE POWER OF ASTRONERGY

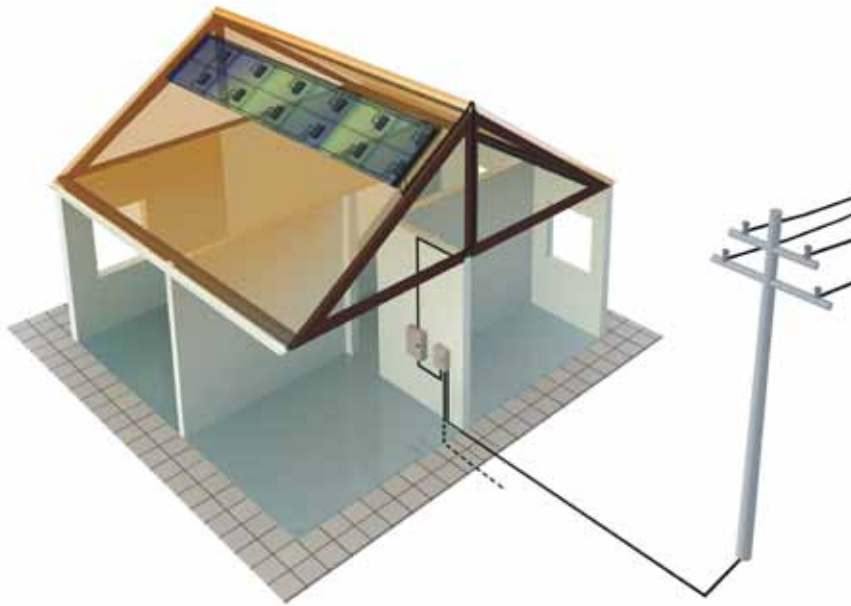


A **CHNT** COMPANY

ASTRONERGY

Benefits of Astronergy Kits

- Astronergy provides all key components of a PV system with high quality.
- Astronergy provides warranty for all system components and excellent after-sale service for our valued customers.
- Astronergy Kits are highly flexible in system size and configurable for all types of roofs.
- All components are meticulously selected, matched and proven to ensure high compatibility and optimized system output.
- Astronergy Kits are designed with the highest standards for safety and durability.



Astronergy provides all key components of a PV system



PV Module



Mounting System



PV Grid-Connected Inverter



DC Box

PV cable



AC Box

MC4 Connector

1. PV Module:



6610M (BL) series



6610M series



6610P series

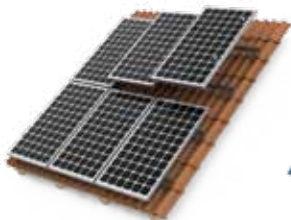


Extended product warranty: 10 years

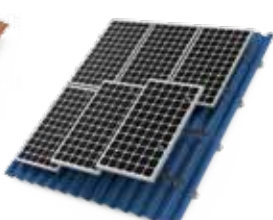
Output warranty of 90% performance P_{mpp}(STC): 10 years

Output warranty of 80% performance P_{mpp}(STC): 25 years

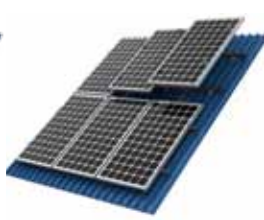
2. Mounting System:



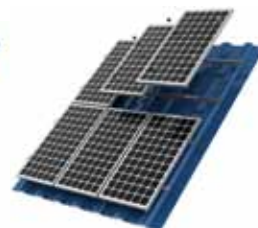
Type: Tile on roof



Type: Corrugated roof



Type: Trapezoidal roof



Type: Standing seam roof

Standard 10-year factory warranty

A durable aluminum alloy and stainless steel structure is seamlessly installed on rooftops. For different kinds of rooftop, we provide different kinds of mounting structures for reference.

3. PV Grid-Connected Inverter:



Certification:



Standard 5-year factory warranty

This product converts direct current to alternating current. Our highly reliable inverter uses an advanced MPP tracking method, is able to adapt to harsh environments, has a maximum efficiency of 96%, and has a user interface displayed in multiple languages.

4. Accessories:






More convenient, economical and reliable electrical components and accessories will be supplied by Chint group sister companies in varieties of kit solutions.

2KW (Europe)



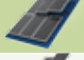

List of Components

Item	PV Module	Mounting System	PV Grid-connected Inverter
Product Type	240wp ~260wp	Tile / Metal sheet roof	CHPI 2KTL
Quantity	8 pcs	2 sets	1 set

PV Module

	Product Type	Quantity	Reference Picture
Option 1	CHSM6610P 240W~250W	8 pcs	
Option 2	CHSM6610M 250W~260W	8 pcs	
Option 3	CHSM6610M BL 245W~255W	8 pcs	

Mounting system

	Roof Type	Quantity	Reference Picture
Option 1	Tile roof (1X 4 units)	2 sets	
Option 2	Corrugated metal sheet roof (1X 4 units)	2 sets	
Option 3	Trapezoidal metal sheet roof (1X 4 units)	2 sets	
Option 4	Standing seam metal sheet roof (1X 4 units)	2 sets	

PV Grid-connected Inverter

	Product Type	Quantity	Reference Picture
Option 1	CHPI 2KTL	1 set	

Accessories (Optional)

PV cable	Connector	DC Box	AC Box
PV 1-F 1*4mm ² 50m(Standard)	MC4 compatible 4 sets (standard)	CHPDB-1-500-16A 1 set	CHPAB-230-16A 1 set




Above design is for reference only, which is adjustable according to customers' requirements.

3KW (Europe)



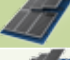

List of Components

Item	PV Module	Mounting System	PV Grid-connected Inverter
Product Type	240wp ~260wp	Tile / Metal sheet roof	CHPI 3KTL
Quantity	12 pcs	3 sets	1 set

PV Module

	Product Type	Quantity	Reference Picture
Option 1	CHSM6610P 240W~250W	12 pcs	
Option 2	CHSM6610M 250W~260W	12 pcs	
Option 3	CHSM6610M BL 245W~255W	12 pcs	

Mounting system

	Roof Type	Quantity	Reference Picture
Option 1	Tile roof (1X 4 units)	3 sets	
Option 2	Corrugated metal sheet roof (1X 4 units)	3 sets	
Option 3	Trapezoidal metal sheet roof (1X 4 units)	3 sets	
Option 4	Standing seam metal sheet roof (1X 4 units)	3 sets	

PV Grid-connected Inverter

	Product Type	Quantity	Reference Picture
Option 1	CHPI 3KTL	1 set	

Accessories (Optional)

PV cable	Connector	DC Box	AC Box
PV 1-F 1*4mm ² 50m(Standard)	MC4 compatible 4 sets (standard)	CHPDB-1-500-16A 1 set	CHPAB-230-25A 1 set




Above design is for reference only, which is adjustable according to customers' requirements.

5KW (Europe)

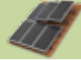



List of Components

Item	PV Module	Mounting System	PV Grid-connected Inverter
Product Type	240wp ~260wp	Tile / Metal sheet roof	CHPI 5KTL/CHPI 5KTL-M2
Quantity	20 pcs	5 sets	1 set


PV Module

	Product Type	Quantity	Reference Picture
Option 1	CHSM6610P 240W~250W	20 pcs	
Option 2	CHSM6610M 250W~260W	20 pcs	
Option 3	CHSM6610M BL 245W~255W	20 pcs	

Mounting system

	Roof Type	Quantity	Reference Picture
Option 1	Tile roof (1X 4 units)	5 sets	
Option 2	Corrugated metal sheet roof (1X 4 units)	5 sets	
Option 3	Trapezoidal metal sheet roof (1X 4 units)	5 sets	
Option 4	Standing seam metal sheet roof (1X 4 units)	5 sets	

PV Grid-connected Inverter

	Product Type	Quantity	Reference Picture
Option 1	CHPI 5KTL/CHPI 5KTL-M2	1 set	

Accessories (Optional)

PV cable	Connector	DC Box	AC Box
PV 1-F 1*4mm ² 100m(Standard)	MC4 compatible 8 sets (standard)	CHPDB-2-500-16A 1 set	CHPAB-230-32A 1 set




Above design is for reference only, which is adjustable according to customers' requirements.

10KW (Europe)



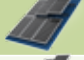

List of Components

Item	PV Module	Mounting System	PV Grid-connected Inverter
Product Type	240wp ~260wp	Tile / Metal sheet roof	CHPI 10KTL
Quantity	40 pcs	10 sets	1 set

PV Module

	Product Type	Quantity	Reference Picture
Option 1	CHSM6610P 240W~250W	40 pcs	
Option 2	CHSM6610M 250W~260W	40 pcs	
Option 3	CHSM6610M BL 245W~255W	40 pcs	

Mounting system

	Roof Type	Quantity	Reference Picture
Option 1	Tile roof (1X 4 units)	10 sets	
Option 2	Corrugated metal sheet roof (1X 4 units)	10 sets	
Option 3	Trapezoidal metal sheet roof (1X 4 units)	10 sets	
Option 4	Standing seam metal sheet roof (1X 4 units)	10 sets	

PV Grid-connected Inverter

	Product Type	Quantity	Reference Picture
Option 1	CHPI 10KTL	1 set	

Accessories (Optional)

PV cable	Connector	DC Box	AC Box
PV 1-F 1*4mm ² 100m(Standard)	MC4 compatible 8 sets (standard)	CHPDB-2-1000-16A 1 set	CHPAB-230/400-25A 1 set




Above design is for reference only, which is adjustable according to customers' requirements.

20KW (Europe)



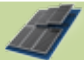

List of Components

Item	PV Module	Mounting System	PV Grid-connected Inverter
Product Type	240wp ~260wp	Tile / Metal sheet roof	CHPI 20KTL
Quantity	80 pcs	20 sets	1 set

PV Module

	Product Type	Quantity	Reference Picture
Option 1	CHSM6610P 240W~250W	80 pcs	
Option 2	CHSM6610M 250W~260W	80 pcs	
Option 3	CHSM6610M BL 245W~255W	80 pcs	

Mounting system

	Roof Type	Quantity	Reference Picture
Option 1	Tile roof (1X 4 units)	20 sets	
Option 2	Corrugated metal sheet roof (1X 4 units)	20 sets	
Option 3	Trapezoidal metal sheet roof (1X 4 units)	20 sets	
Option 4	Standing seam metal sheet roof (1X 4 units)	20 sets	

PV Grid-connected Inverter

	Product Type	Quantity	Reference Picture
Option 1	CHPI 20KTL	1 set	

Accessories (Optional)

PV cable	Connector	DC Box	AC Box
PV 1-F 1*4mm ² 200m(Standard)	MC4 compatible 16 sets (standard)	CHPDB-4-1000-16A 1 set	CHPAB-230/400-50A 1 set




Above design is for reference only, which is adjustable according to customers' requirements.

2KW (Australia)



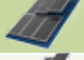

List of Components

Item	PV Module	Mounting System	PV Grid-connected Inverter
Product Type	240wp ~260wp	Tile / Metal sheet roof	CHPI 2KTL-AS
Quantity	8 pcs	2 sets	1 set

PV Module

	Product Type	Quantity	Reference Picture
Option 1	CHSM6610P 240W~250W	8 pcs	
Option 2	CHSM6610M 250W~260W	8 pcs	
Option 3	CHSM6610M BL 245W~255W	8 pcs	

Mounting system

	Roof Type	Quantity	Reference Picture
Option 1	Tile roof (1X 4 units)	2 sets	
Option 2	Corrugated metal sheet roof (1X 4 units)	2 sets	
Option 3	Trapezoidal metal sheet roof (1X 4 units)	2 sets	
Option 4	Standing seam metal sheet roof (1X 4 units)	2 sets	

PV Grid-connected Inverter

	Product Type	Quantity	Reference Picture
Option 1	CHPI 2KTL-AS	1 set	

Accessories (Optional)

PV cable	Connector	DC Box	AC Box
PV 1-F 1*4mm ² 50m(Standard)	MC4 compatible 4 sets (standard)	CHPDB-1-500-16A 1 set	CHPAB-230-16A 1 set




Above design is for reference only, which is adjustable according to customers' requirements.

3KW (Australia)



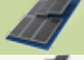

List of Components

Item	PV Module	Mounting System	PV Grid-connected Inverter
Product Type	240wp ~260wp	Tile / Metal sheet roof	CHPI 3KTL-AS
Quantity	12 pcs	3 sets	1 set

PV Module

	Product Type	Quantity	Reference Picture
Option 1	CHSM6610P 240W~250W	12 pcs	
Option 2	CHSM6610M 250W~260W	12 pcs	
Option 3	CHSM6610M BL 245W~255W	12 pcs	

Mounting system

	Roof Type	Quantity	Reference Picture
Option 1	Tile roof (1X 4 units)	3 sets	
Option 2	Corrugated metal sheet roof (1X 4 units)	3 sets	
Option 3	Trapezoidal metal sheet roof (1X 4 units)	3 sets	
Option 4	Standing seam metal sheet roof (1X 4 units)	3 sets	

PV Grid-connected Inverter

	Product Type	Quantity	Reference Picture
Option 1	CHPI 3KTL-AS	1 set	

Accessories (Optional)

PV cable	Connector	DC Box	AC Box
PV 1-F 1*4mm ² 50m(Standard)	MC4 compatible 4 sets (standard)	CHPDB-1-500-16A 1 set	CHPAB-230-25A 1 set




Above design is for reference only, which is adjustable according to customers' requirements.

5KW (Australia)





List of Components

Item	PV Module	Mounting System	PV Grid-connected Inverter
Product Type	240wp ~260wp	Tile / Metal sheet roof	CHPI 5KTL-AS
Quantity	20 pcs	5 sets	1 set


PV Module

	Product Type	Quantity	Reference Picture
Option 1	CHSM6610P 240W~250W	20 pcs	
Option 2	CHSM6610M 250W~260W	20 pcs	
Option 3	CHSM6610M BL 245W~255W	20 pcs	

Mounting system

	Roof Type	Quantity	Reference Picture
Option 1	Tile roof (1X 4 units)	5 sets	
Option 2	Corrugated metal sheet roof (1X 4 units)	5 sets	
Option 3	Trapezoidal metal sheet roof (1X 4 units)	5 sets	
Option 4	Standing seam metal sheet roof (1X 4 units)	5 sets	

PV Grid-connected Inverter

	Product Type	Quantity	Reference Picture
Option 1	CHPI 5KTL-AS	1 set	

Accessories (Optional)

PV cable	Connector	DC Box	AC Box
PV 1-F 1*4mm ² 100m(Standard)	MC4 compatible 8 sets (standard)	CHPDB-2-500-16A 1 set	CHPAB-230-32A 1 set



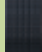
Above design is for reference only, which is adjustable according to customers' requirements.

3KW (North America)





List of Components

Item	PV Module	Mounting System	PV Grid-connected Inverter
Product Type	240wp ~260wp	Tile / Metal sheet roof	CHPI 3KTL-US
Quantity	12 pcs	3 sets	1 set

PV Module

	Product Type	Quantity	Reference Picture
Option 1	CHSM6610P 240W~250W	12 pcs	
Option 2	CHSM6610M 250W~260W	12 pcs	
Option 3	CHSM6610M BL 245W~255W	12 pcs	

Mounting system

	Roof Type	Quantity	Reference Picture
Option 1	Tile roof (1X 4 units)	3 sets	
Option 2	Corrugated metal sheet roof (1X 4 units)	3 sets	
Option 3	Trapezoidal metal sheet roof (1X 4 units)	3 sets	
Option 4	Standing seam metal sheet roof (1X 4 units)	3 sets	

PV Grid-connected Inverter

	Product Type	Quantity	Reference Picture
Option 1	CHPI 3KTL-US	1 set	




Above design is for reference only, which is adjustable according to customers' requirements.

5KW (North America)



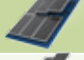

List of Components

Item	PV Module	Mounting System	PV Grid-connected Inverter
Product Type	240wp ~260wp	Tile / Metal sheet roof	CHPI 5KTL-US
Quantity	20 pcs	5 sets	1 set


PV Module

	Product Type	Quantity	Reference Picture
Option 1	CHSM6610P 240W~250W	20 pcs	
Option 2	CHSM6610M 250W~260W	20 pcs	
Option 3	CHSM6610M BL 245W~255W	20 pcs	

Mounting system

	Roof Type	Quantity	Reference Picture
Option 1	Tile roof (1X 4 units)	5 sets	
Option 2	Corrugated metal sheet roof (1X 4 units)	5 sets	
Option 3	Trapezoidal metal sheet roof (1X 4 units)	5 sets	
Option 4	Standing seam metal sheet roof (1X 4 units)	5 sets	

PV Grid-connected Inverter

	Product Type	Quantity	Reference Picture
Option 1	CHPI 5KTL-US	1 set	




Above design is for reference only, which is adjustable according to customers' requirements.

14KW (North America)



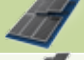

List of Components

Item	PV Module	Mounting System	PV Grid-connected Inverter
Product Type	240wp ~260wp	Tile / Metal sheet roof	CHPI 14KTL-US
Quantity	56 pcs	14 sets	1 set


PV Module

	Product Type	Quantity	Reference Picture
Option 1	CHSM6610P 240W~250W	56 pcs	
Option 2	CHSM6610M 250W~260W	56 pcs	
Option 3	CHSM6610M BL 245W~255W	56 pcs	

Mounting system

	Roof Type	Quantity	Reference Picture
Option 1	Tile roof (1X 4 units)	14 sets	
Option 2	Corrugated metal sheet roof (1X 4 units)	14 sets	
Option 3	Trapezoidal metal sheet roof (1X 4 units)	14 sets	
Option 4	Standing seam metal sheet roof (1X 4 units)	14 sets	

PV Grid-connected Inverter

	Product Type	Quantity	Reference Picture
Option 1	CHPI 14KTL-US	1 set	




Above design is for reference only, which is adjustable according to customers' requirements.

20KW (North America)



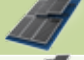

List of Components

Item	PV Module	Mounting System	PV Grid-connected Inverter
Product Type	240wp ~260wp	Tile / Metal sheet roof	CHPI 20KTL-US
Quantity	80 pcs	20 sets	1 set


PV Module

	Product Type	Quantity	Reference Picture
Option 1	CHSM6610P 240W~250W	80 pcs	
Option 2	CHSM6610M 250W~260W	80 pcs	
Option 3	CHSM6610M BL 245W~255W	80 pcs	

Mounting system

	Roof Type	Quantity	Reference Picture
Option 1	Tile roof (1X 4 units)	20 sets	
Option 2	Corrugated metal sheet roof (1X 4 units)	20 sets	
Option 3	Trapezoidal metal sheet roof (1X 4 units)	20 sets	
Option 4	Standing seam metal sheet roof (1X 4 units)	20 sets	

PV Grid-connected Inverter

	Product Type	Quantity	Reference Picture
Option 1	CHPI 20KTL-US	1 set	

Above design is for reference only, which is adjustable according to customers' requirements.



CORPORATE HEADQUARTERS

Chint Solar (ZheJiang) Co., Ltd.
 1335 Bin'an Road, Binjiang District
 Hangzhou, Zhejiang Province, 310053
 China
 Tel: + 86 571 5603 1888
 Fax: + 86 571 5603 2383

MANUFACTURING PLANTS

Hangzhou, Shanghai & Jiuquan

SUBSIDIARIES

Spain

Chint Solar Hispania S.L.
 Paseo de Gracia, 78, 2-2A
 08008 Barcelona,
 Spain
 Tel: + 34 9346 73778
 Fax: + 34 9346 73789

Germany

Astronergy GmbH
 Karlstr. 8
 88212 Ravensburg,
 Germany
 Tel: + 49 (0)751 295096-10
 Fax: + 49 (0)751 295096-39

North America

Astronergy Solar, Inc.
 Suite 1125, 795 Folsom Street,
 San Francisco, CA 94107
 USA
 Tel: +1 650 392 2777

Japan

KoyoAstro Co., Ltd.
 1-5-6, Higashi-Nihonbashi, Chuo-ku,
 Tokyo 103-0004,
 Japan
 Tel: + 03 5820 2141
 Fax: + 03 5820 2142

Korea

Astronergy Solar Korea
 5th FL. Cowell Bldg, 66-1,
 Banpo-Dong, Seocho-Gu,
 Korea
 Tel: + 82 (0)2 2226 3911
 Fax: + 82 (0)2 2226 3910

Thailand

Astronergy Solar Korea (Thailand) Co., Ltd.
 184/88 Forum Tower 18FL
 Ratchadapisek Rd., Huay-Kwang,
 Bangkok 10320
 Thailand
 Tel: + 662 645 4155
 Fax: + 662 245 3185